

NEWSLETTER June/ July 2021



LITTLE SHUSWAP LAKE BAND

What's new in this issue:

- Cannabis By law
- CDE Update
- Quaaout Lodge's NEW Patio
- Master Housing Development

Waytk,

I would like to thank everyone for keeping our community safe during this Covid pandemic and to those that received the two vaccinations, as well as the essential workers that worked in the Offices, Quaaout, Wellness Department, Gas Station, Emergency crew, Fire Department and Maintenance.

It has been a different type of education program over last couple of years wishing the student's a successful year as they wrap up the school year and move on to higher educational institutions. Lets be safe during the summer and keep an eye on our children as the summer and swimming season approaches, be safe on our water crafts. During this time of camping and fires ensure that you have water and shovel nearby to prevent fires from escaping.

Since the supply of sage has been harvested already we will be venturing into the mountains to harvest the fiddle heads, potato's, spinach, mushrooms and waiting for the berries to ripen, good luck to all that still harvest these wild foods.

In light of the find at the Kamloops Residential school, this has brought back many painful experiences for those of us that have been in such institutions, lets take care of ourselves during this time and be respectful as we do not know who has been in such places. During this time we had a sacred fire burning for four days and four nights had many drop in to talk, or just talk sit and have a coffee, drop tobacco in the fire prayers drumming and singing. Thank You to all that took part in this event, fire keepers, those that provided food, and shelter.

Our Band Administrator Paul Donald has taken another position with his community Simpcw and we wish him all the best in his new venture. We will be interviewing a replacement for this position this week to get a suitable candidate with experience. Wishing us all a good summer and be safe as the Covid stat's are decreasing and we will be able to take road trips to visit with family and friends near and far.

Yours In Spirit Kukpi7 Oliver Arnouse



Membership

It is imperative at the moment that we let the membership know that in order to keep the status quo of our benefits hinges upon the successes of our economic development plans. These benefits include but are not limited to snow removal, subsidized housing, security, village maintenance, and employment opportunities. With these in mind and future generations of Little Shuswap Lake Band members, projects like a Gravel Esker, Wastewater initiative need to be accepted within the community. And if there is opposition, please let your voice be heard.

We want our community to move in a positive direction in the future. These will translate into a community resource for community gains. It is our hope when you speak your truth that you come from a place that is informed. Stay tuned for updates on various projects happening on our land.



Election Notice

Due to the rise in cases of the Coronavirus in Indigenous communities both provincially and within the Secwepemc Nation, Chief and Council have made the decision to postpone the upcoming election in accordance with Indigenous Services Canada guidelines. The First Nations Elections Act provides for the postponement of elections for a period of six (6) months. In addition, the act outlines that respective Chief and Councils have the right to extend the postponement of the election for an additional six (6) months should the need arise.

Nicole Hajash from OneFeather has been officially appointed as the Electoral Officer for the Skwlax Chief and Council and will be responsible for future election notifications. The date set for the Election is to be October 23, 2021. If you have any questions or concerns, please direct them to Nadia Bassett at nbasset@lslb.ca

Indigenous Peoples Day- June 21

This is an official day to celebrate the culture and contributions of First Nations, Inuit and Métis communities in Canada. June 21 was chosen because of its alignment with the summer solstice, which is a significant day to the many Indigenous Peoples and communities who have celebrated on this day for generations.

We will be doing live streaming during 10:00am- 1:00pm with local elders and performers. Please join us for an opening prayer by Kukpi7 Oliver Arnouse.

To access the live stream for National Indigenous People’s Day, please go to

www.youtube.com/channel/LittleShuswapLakeBand



QUAAOUT LODGE

Whipped Sxusem (Soapberry) \$8

Smoked Wild Salmon Bannock Burger \$20
Maple Glaze, Spruce Tip Mayo, Lettuce,
Pickled Red Onion

LE7KE SPA

30- minute back, neck, shoulder
massages using Shuswap inspired oils

Book by calling the spa at 250-679-3018.

OFFICES ARE CLOSED FOR NATIONAL INDIGENOUS PEOPLES DAY (JUNE 21) AND CANADA DAY (JULY 1)

Cannabis By Law Referendum

In the last year I have been observing the cannabis industry as it pertains to LSLB. My observations and inquiries with other nations points to creating a Skwlax Cannabis Law (SCL). The SCL will present opportunities, as well as challenges for our community and members of LSLB. The status of the SCL is in the hands of the LSLB band members. A simple majority mail in ballot has been distributed by OneFeather community engagement consulting group to members of LSLB. The deadline for the vote “for or against” a Skwlax Cannabis Law is June 30th. The full draft of the law is on the LSLB website (www.lslb.com/documents/policies). The law firm who specializes in First Nation Cannabis law, who has created the draft of the Skwlax Cannabis Law is Mertle Title. With that said, I invite you to ask questions, share input and request information. Please do not hesitate to contact myself or the LSLB Finance Manager, Susan Keenan regarding the Skwlax Cannabis Law (SCL).

Councilor Wes Francois



Education

Summer is in the air and it is also that time of year to for graduates of students attending K-12. I would like to take this moment to congratulate LSLB members that have graduated from all levels of education. I always reflect on a saying shared by various leaders “ Education is the key to success”. This is the time to process any post-secondary applicants gearing up for the Fall 2021 intake. Yes it is getting to the eleventh hour but its never to late for an education. Covid vaccines have been distributed over the last few months and hopefully some semblance of normalcy will return to our world. By September 2021, post-secondary hope to resume in person instruction which is still a maybe at this point. To manage the potential influx, as a result of getting back to normalcy, please review the following documents.

- 1. Post-secondary Policy: Available online, the Front Desk or from LSLB Education Manager Joan Arnouse jarnouse@lslb.ca
 - 2. K-12 Policy: Available online, the Front Desk and from your LSLB K-12 Education Assistant Bev Tomma btomma@lslb.ca
- Please get a copy of these documents/ applications / policies as early as possible. The LSLB education manager will be flexible as possible in terms of funding for school, but timing is essential when LSLB requests funding for post-secondary applicants from Indigenous Services Canada (ISC).

Councilor Wes Francois

Chase Secondary

Alex McBryan

Brianna Billy

Darian Jackson

Neskonlith Education Centre

Taylor Billy-Narcisse

Red Deer Golden

Danika McBryan

Surrey BC

Dysennia Perez - Francois

Vancouver Community College

Ashley Bitz, Nursing program

Thompson Rivers University

Dale Tomma,Adventure Guide Diploma

Canadian Christian College

Jonah August, Counselling



Quaaout Lodge Updates

Jack Sam’s Restaurant

We are very excited to announce the Grand Re-Opening of the Jack Sam’s patio will be July 8th. Our new Menus have just been released, and don’t forget about Prime Rib Fridays, and Weekend Brunch!

Le7ke Spa

June Spa specials:
\$95 Massages for Dad!
Book your Dad a 1 hour Massage and receive a \$10 voucher for your next service. (Voucher not to be combined with special)
Le7ke Total Body Restore and Renew Package
Approximately 2.5 hrs
-Vichy Skin Renew Sugar Scrub –With a deep Conditioning Hair Treatment
- Sauna
- Fully Body Milk and Honey Moisture Mud Wrap
-Chocolate Mousse deep Hydration Face Mask
-One-hour Swedish Relaxation Massage
\$299

Talking Rock Golf Course

Golf Academy Dates: <https://quaaoutlodge.com/golf-academy/>

New cart compound should be complete by July



LUNCH

WEEKLY SPECIALS MENU

MONDAY \$18

Pulled Rossdown Farm Chicken Clubhouse
Focaccia, Lettuce, Tomato, Rocana Bacon, Garlic Mayo
Choice of
Daily Soup, Salad or Fries

TUESDAY \$18

Pasta of the Day
Daily feature pasta using seasonal ingredients

WEDNESDAY \$18

Seasonal Farm Fresh Quiche
Choice of
Daily Soup, Salad or Fries

THURSDAY \$18

Bison Chili Bannock "Taco"
lettuce, tomato, cheese, sour cream, salsa
Choice of
Daily Soup, Salad or Fries

FRIDAY \$18

Buttermilk Fried Willow House Farm Chicken
Coleslaw, Sweet Pickles, French Fries

A gratuity of 18% will be automatically applied to groups of 8 or more.





COVID-19 – CDE Team - Community Update

June 15, 2021

On June 14th, the BC government has announced that BC will now be entering into Step 2 of the 4-Step Restart Plan. It is important to note that this gradual restart is centered around the continuing decrease of positive COVID-19 case numbers in the province and the uptake on the vaccination. If there is an increase of positive COVID-19 cases within the province, then there is a chance that a Provincial Circuit Breaker will be put back in place, so it is important that we all continue with the safety measures that are currently put in place.

Step 2: Starting June 15th

The criteria for Step 1 is there is at least 65% of the 18+ population vaccinated with dose 1, along with decreasing case counts and COVID-19 hospitalizations.

Personal Gatherings

- Outdoor personal gatherings up to 50 people.
- Indoor personal gatherings up to 5 people or 1 other household.

Organized Gatherings

- Outdoor seated organized gatherings up to 50 people with a COVID-19 Safety Plan.
- Indoor seated organized gatherings up to 50 people with a COVID-19 Safety Plan.

Travel

- Recreational travel within BC is allowed.
- BC Transit and BC Ferries – increased services as needed.

Businesses

- Banquet halls reopen – limited capacity, Safety Plans.
- Sector consultations on next steps on easing restrictions.
- Indoor and outdoor dining for groups up to 6 people (not restricted to household or bubble).

Offices and Workplaces

- Continue return to work.
- Small in-person meetings.
- Employers must continue to have a COVID-19 Safety Plan and daily health check in place.



Sports and Exercise

- High-intensity indoor fitness classes – reduced capacity.
- Indoor team games for all ages – no spectators.
- Spectators for outdoor sports – up to 50 people.
- Outdoor games and practices for both adults and youth group/team sports allowed.

PHO Guidance

- Physical distancing and masks continue to be required in public indoor settings.
- If you or anyone in your family feels sick, stay home and get tested immediately.

It is projected that BC will be able to enter into Step 3 as early as July 1, provided that at least 70% of the 18+ population is vaccinated with dose 1, there is a low case count, and COVID-19 hospitalizations continue to decline.

Thanking to all of the band members, community members, and staff of LSLB for all of your dedication and cooperation over the past year. Your efforts and commitment in ensuring each other's health and safety has not gone unnoticed and has been greatly appreciated.

Kukstsemc,
LSLB CDE Team

BRITISH COLUMBIA CAMPFIRE REGULATIONS



Violating these regulations could cost you **\$1,150**.

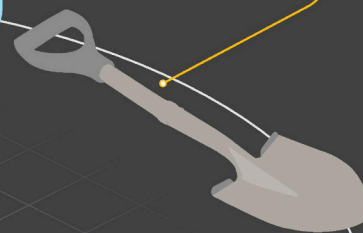
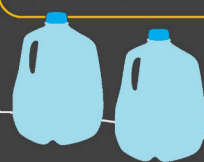
If a violation causes a wildfire, the person responsible may also be ordered to pay all firefighting and associated costs.

CAMPFIRE SIZE

A campfire is defined as a fire no larger than 0.5 metres high and 0.5 metres in diameter. Fires larger than that are considered Category 2 open fires and are illegal if Category 2 open burning prohibitions are in effect.

8 LITRES OR A HAND TOOL

You must keep at least eight litres of water or a hand tool on hand at all times while your campfire is lit.



0.5 metres

0.5 metres



PUTTING OUT YOUR FIRE

Before you leave the area for any amount of time, your campfire **MUST** be fully extinguished. The ashes of your fire must be cool to the touch.

FUEL BREAK

You must have a fuel break around your campfire. This area must be cleared of debris and anything combustible. It needs to be wide enough to stop the spread of the fire. A rock ring around the fire can also help prevent it from spreading.

You **MUST NOT** leave your fire unattended for **ANY** length of time.

Report wildfires, unattended campfires or violations of regulations by calling ***5555** on a cell or **1 800 663-5555** toll-free.



As we move towards the summer months, and the temperature increases, we are reminded of the ever-looming wildfire hazards that impact our area. Environment and Climate Change Canada has recently reported that the Interior of BC has received a record-breaking dryness over the past 3 months and is forecasting that we will have a hot summer, with the potential of a drought. This is good news for those that are made of sugar, but very concerning news for the rest of us as the fire danger rating for the area is currently rated at a 4 (high danger) and has the potential to jump into a level 5 (Extreme Danger) over the next few weeks.

So how do we keep ourselves and the community safe? There are several things a person can do to keep everyone safe during wildfire season:

- Be mindful of the current conditions when entering the back country or partaking in any recreational activity.
- FireSmart your home and property. For recommendations on FireSmart activities visit the BC FireSmart webpage www.firesmartbc.ca, or contact me to have your home and property assessed.
- Follow BC Wildfire webpage <https://www2.gov.bc.ca/gov/content/safety/wildfire-status> for information on wildfires of note,

burning restrictions, and wildfire prevention tips.

Finally, it is very important to report a fire as soon as possible. BC Wildfire Services launched their official wildfire app last year, which makes reporting a wildfire simpler. This app provides a contact information for reporting, your coordinates, and you can upload pictures. When reporting a wildfire, it is also helpful to provide some additional information like location, size, rate of spread, fuel type, smoke/flames, threat, and is there any action being done. The app also provides real-time wildfire information, an interactive map, latest news and advisories, statistics, and most importantly a fire reporting tool. This app is available for download on both Android and Apple.

Please note that you can also call BC Wildfire Services at 1-800-663-5555 to report a wildfire.

Take care and stay safe!

Andrea Stelter
Emergency Program Coordinator
Little Shuswap Lake Band

Your Skwlax Fire Department is gearing up for a busy 2021 season!



Weytkp

Skwlax Wellness is proud to announce that we have successfully completed our first and second dose vaccine clinics in Little Shuswap.

1st Covid-19 Vaccination Clinic in March 2021 – total of 227 people received dose 1 of Moderna

2nd Covid-19 Vaccination Clinic in May 2021 – total of 214 people received dose 2, and 7 people received dose 1 of Moderna

Kukstsemc to Skwlax Wellness Centre staff and the CDE team for all their hard work and support.

In due time, Skwlax Wellness will be working with Chief and Council and other departments such as Education to gather the community and focus on a recovery plan for Little Shuswap. We look forward to the day where we can all gather again. Until then please continue to follow the BC health restrictions and guidelines to keep our community safe. Thank you for all the work and sacrifices made by the band and community members that has significantly



limited the impact of Covid-19 in our community.

All youth in BC age 12 or older are now able to register for a COVID-19 first-dose vaccination appointment as part of the province's COVID-19 immunization plan.

Planning is underway for those who may be interested. Please call Tina, Community Health Nurse at 250-679-3702 if you have any questions.

Please read the following news release and information sheet regarding this announcement.

[COVID-19 Vaccinations Now Available to Youth Age 12 and Older \(fnha.ca\)](https://www.fnha.ca/COVID-19-Vaccinations-Now-Available-to-Youth-Age-12-and-Older)

[FNHA-COVID-19-Vaccinations-for-Youth-12-Plus.pdf](#)

With some restrictions being lifted we will begin to slowly phase into resuming Covid-19 safe services and programs. Please follow Skwlax Wellness Centre's Facebook page for more info.

Kukstsemc and take care of yourselves and your family.



Wonder what those vents are for?

Do you ever question what that noisy fan in the ceiling of your bathroom is for? This little fan plays a major part in removing excess moisture from your bathroom which then prevents mold and mildew. The bathroom fan also helps remove odors and airborne contaminants.

Curious as to what the fan above your stove does? The fan above your stove has a very important job. This loud fan is not only used to drown out the sound of someone's conversation, but its main purpose is to improve the air quality in your kitchen. These vents remove cooking odors, grease, steam, and smoke that are released into the air during cooking.

Wonder what that large grate in the side of the wall is? That large metal grate in the wall is the cold air return for the heating system. Keeping the cold air return clean helps reduce the amount of allergens and dust in your home. It is also very important to not block/cover the cold air return as this can cause the furnace to store too much heat and eventually crack which can lead to carbon monoxide leaking into your home.

Keeping your vents clean promotes a healthier home and a safer home. Once a year make sure you clean the bathroom fan and the cold air return. Every 6 months clean the grease filter in the vent above your stove. Remember a build up of grease can cause fires.

If you have questions or need the Housing Maintenance Team to show you how to clean your vents, please call us. We'd love to hear from you! 250-679-3203 ext. 156



Housing

Over the last several years, in conjunction with the Housing Department, I have been creating a comprehensive plan to renovate and construct new homes at Little Shuswap. This concept is not new nor is it an easy process. We utilized work/ plans from the past and integrated them into new housing initiatives. These initiatives include a renovation program, new construction and restructuring and/ or adding more definition to the housing policy that was created by the housing committee a few years ago. I am excited to share with you, the Master Housing Development Plan (MHDP). We have been working on this housing plan over the last few years and are so proud to share this as part of an ongoing series in the LSLB newsletter. The MHDP has 18 components (I-XVIII), and we are breaking it down into smaller parts for your reading pleasure. It is a guide and the MHDP contains many types of opportunities for LSLB members to participate in through this band housing initiative. I hope you will share in my excitement about the opportunities and challenges that may present itself through this series. This month of the June newsletter will cover **Section 2 ; Community Engagement Scope : V – X.**

Master Housing Plan
Table of contents

- 1) **Background** : Shared in February Newsletter
Sections: I – VII: Shared in April Newsletter
- 2) **Community Engagement Scope**
Sections
 V : Home Inspections
 VII : Community Housing and Demographic Survey
 X : Areas to Study Further
- 3) **Community Engagement Results** : Upcoming Newsletter
Sections: XI - XII
- 4) **Key Action Items** : Upcoming Newsletter
Sections: XIII-XVIII

Community Engagement Scope

I) Little Shuswap Lake Band Home Inspections

A key piece of the methodology in creating a Master Housing Development Plan for Little Shuswap Lake Band regarded the identification of a strategy to address current housing on all LSLB reserves. In consulting with membership, the Comprehensive Community Plan, and the Chief and Council of Little Shuswap Lake Band, 24 homes were identified as being in need of a comprehensive inspection program to assess their current state, and the costs required to bring these homes to a place where they can be lived in without risk to the occupant. The homes identified are known as ‘Phase 1-4’ homes within the Housing Department of Little Shuswap Lake Band.

These 24 homes were identified for the following reasons:

- Predominately occupied by Elders

- Some of the oldest homes on Little Shuswap Lake Band reserves
- Anecdotal evidence of health and safety issues

These criteria are relevant in that they align with the community goals of the Comprehensive Community Plan to provide safe housing to its membership, particularly to Elders. The identification of these homes also aligns with Little Shuswap Lake Band’s vision statement regarding ‘Ensuring our members enjoy a high quality of life through service delivery and the benefits of a safe, healthy, and prosperous community.’

Little Shuswap Lake Band retained the services of John Kostelnik from Current Enterprises (*Bio, clearances, and certifications attached as Appendix 5*) to complete inspections and recommended mitigation strategies for each of the 24 homes designated according to the preceding criteria.

While inspections of the homes currently on reserve can address the ‘now’ issues surrounding Housing availability on Little Shuswap Lake Band reserves, in order to fully realize the aspirations of the community and administration in the Comprehensive Community Plan and Band Vision Statement; Little Shuswap Lake Band needed to identify a strategy to meet future Housing needs using a proactive and empirical approach.

I) Community Housing and Demographic Survey

Little Shuswap Lake Band retained the services of Urban Systems to design a Community Survey. This survey was completed by LSLB band members and community members. A team retained by Little Shuswap Lake Band brought the survey door to door over the period of one month to capture as many results as possible.

The goal behind the Community Housing and Demographic Survey was to capture several key pieces of information:

- Housing Overcrowding- LSLB needed to identify how many residents lived in individual homes and if the number of individuals represented overcrowding based on the number of bedrooms to the number of people.
- Multi generation homes- Identification of homes which held several generations of the same family that may be creating pressure within the home and discourage the growth of younger families due to lack of space
- Community Demographics- LSLB wished to create a snapshot of the education, employment, and mobility status of community members living on reserve.
- Movement on and off Reserve- Housing waitlists may not be accurate indicators of membership wishing to return to the reserve. In a small community such as LSLB, the housing situation is general knowledge, which may create an environment in which individuals who may wish to return to the reserve do not apply for housing; knowing that no housing is currently available
- Population Modelling- The information contained within the survey will allow Little Shuswap Lake Band to create high and low models for population growth in the community. Such information will allow Little Shuswap to anticipate the housing needs of their community in the future and proactively manage housing stock to meet such needs.

As stated earlier, the next newsletter will continue this information in a series that lays out the Little Shuswap Lake Band Master Housing Plan.

in this issue >>>

- What are Designated Lands?
- Area 1 – Lot 247 80280 CLSR (Skwlax Centre)
- Area 2 – Helicopter Hangar
- Area 3 – Industrial Park
- Area 4 - Hayfield**

SKWLAX
LITTLE SHUSWAP LAKE BAND

Issue **TWO**

May 2021

Updated information to Band Membership on the proposed lands for designation

Lands Designation Vote 2021

Designated Lands are lands that the members of the Little Shuswap Lake Band have agreed to lease for economic development purposes as set out in the designation. They can be used for things like commercial, agricultural, recreational or other purposes which are voted on by the members according to the rules of the Indian Referendum Regulations. *It is important to note that designated land remain reserve lands.*

A designation vote is done by simple majority – a simple majority requires that a majority of those who participate in the vote, vote in favour of the designation, regardless of the number of persons eligible to vote.

Passing the new designation would mean economic development opportunities with certain types of businesses and for membership to open their own business. For greater clarity here is a list of what the land can and cannot be used for:

✓ Allowable uses:		✗ Prohibited Uses:
<ul style="list-style-type: none"> Animal clinic Auctioneering establishments Autobody repair and paint shops Automotive recreation vehicle services Brewing or distilling Bulk fuel depots Business support services Call centers Cannabis cultivation, processing and dispensary facilities Car washes Commercial storage Concrete plants Contractor services Crematorium Custom indoor manufacturing Drive-through vehicle services Educational or training facilities 	<ul style="list-style-type: none"> Equipment rental, sales and repair shops Emergency and protective services Fleet services Industrial processing Kennels Lumber yards and facilities Manufacturing and repair shops Nurseries and greenhouses Offices, construction and development industry Outdoor Storage Recreation services, indoor Recycling depots, plants and material drop-off centre Restaurants Retail stores Services stations Storage facilities and yard services Truck and mobile home sales/rentals Utility services 	<ul style="list-style-type: none"> A slaughter house Storage of toxic chemicals A chemical treatment plant A waste disposal facility A bulk fuel refinery

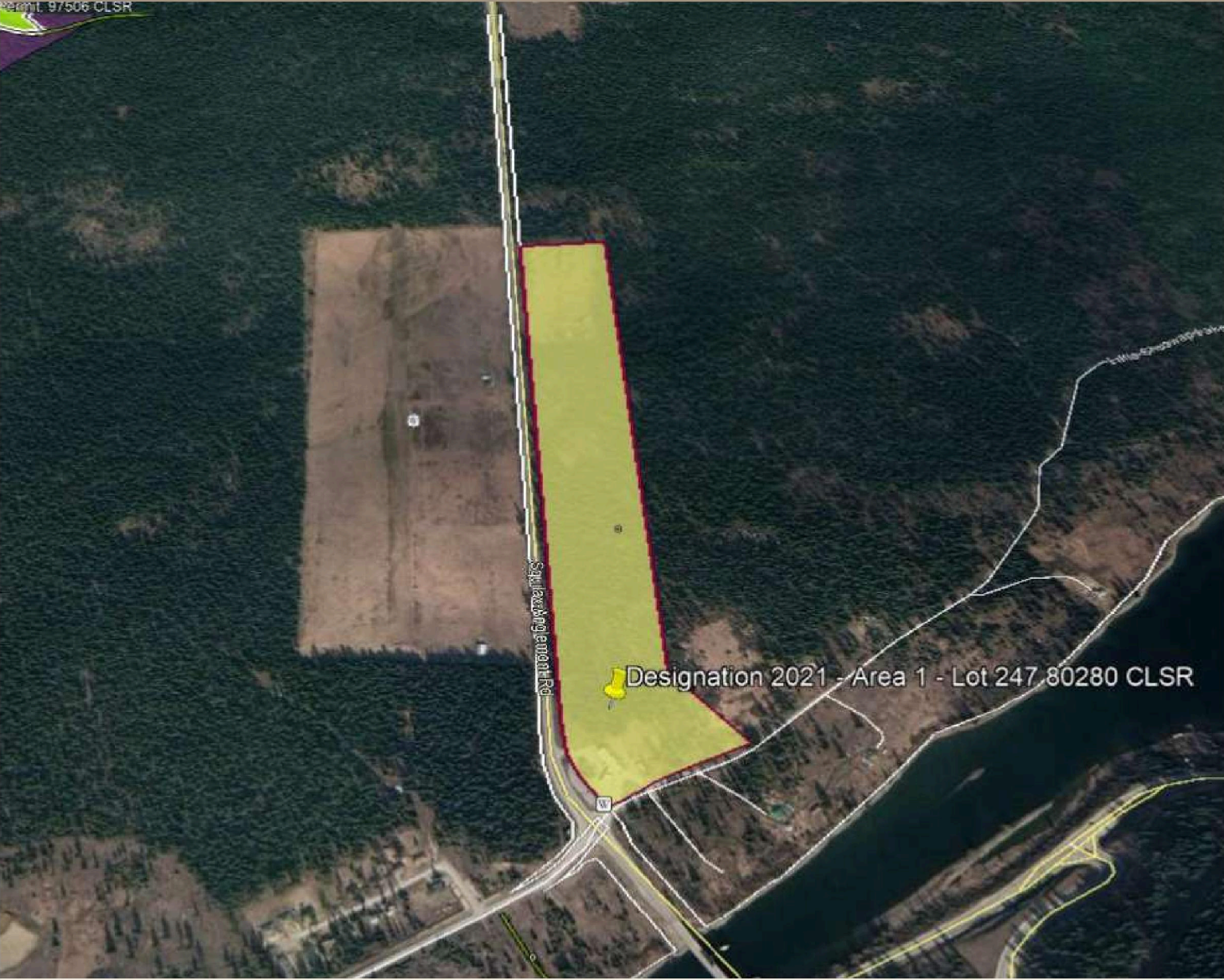
Who Can Vote?

In accordance with the Indian Referendum Regulations an individual is eligible to vote in a designation vote if they are a registered member of the Little Shuswap Lake Band, is at least 18 years of age and not disqualified from voting in the election.

What determines a successful Vote?

Following a successful designation vote, the LSLB will submit a Band Council Resolution requesting that the Minister accept the designation. Indigenous Services Canada Regional Staff will prepare a Ministerial Order submission for the Minister's consideration. The Lands cannot be leased until such time as the designation has been accepted by the Minister.

Area 1* – Lot 247 – Skwlax Centre site >>>



EXISTING DESIGNATION:

- None

REASON FOR DESIGNATION:

- To allow for registerable, marketable and enforceable commercial/retail leases

DESIGNATION TYPE:

- Hybrid

CURRENT STATUS:

- ESA Phase I being carried out by Sage Environmental
- ESA Phase II will be completed in the near future

CURRENT USE(S):

- gas bar/convenience store
- commercial/retail office spaces
- residential housing units
- unauthorized short term parking by the public
- O & M Department storage



Area 2* – Helicopter Hangar >>>



EXISTING DESIGNATION:

- None

REASON FOR DESIGNATION:

- To allow for registerable, marketable and enforceable commercial lease

CURRENT STATUS:

- Environmental Site Assessment (ESA) – Phase I has been completed
- De-registered as an air strip/heli-pad
- Past tenant has vacated
- Band has addressed environmental issues

DESIGNATION TYPE:

- Hybrid

PROPERTY USE(S):

- Historically used as a hayfield under a buckshee permit
- Most recently used as a helicopter hangar under a buckshee permit



Area 3* – Industrial Park >>>



EXISTING DESIGNATION:

- None. Buckshee permits issued in the past

REASON FOR DESIGNATION:

- To allow for registerable, marketable and enforceable commercial lease

DESIGNATION TYPE(S):

- Hybrid

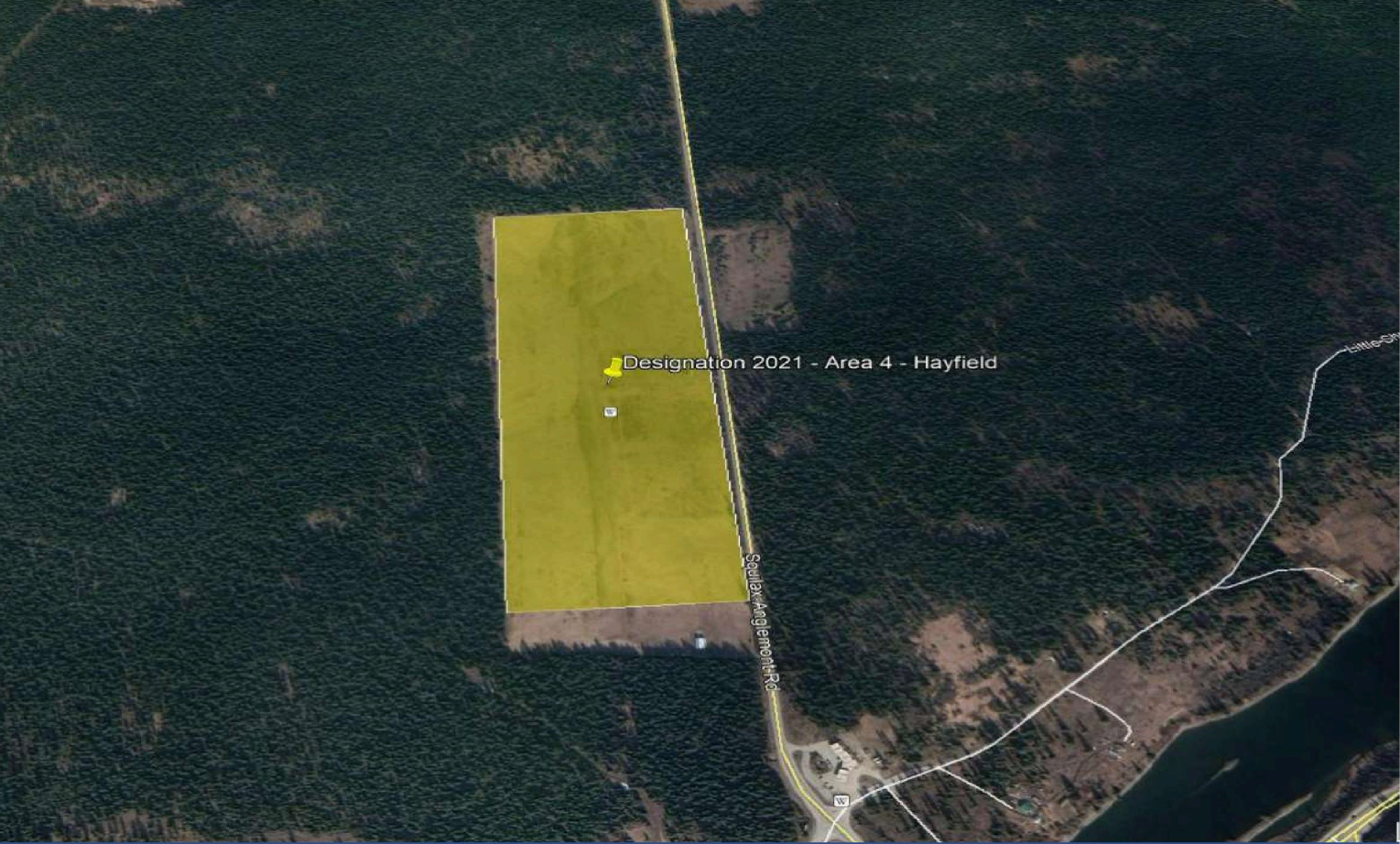
CURRENT STATUS:

- Environmental Site Assessment (ESA) – Phase 1 and 2 completed on the properties
- Tenants have been advised of the Band’s decision to have them vacate the properties
- Tenants are in the process of vacating and cleaning up properties
- Buckshee leases have been terminated

PROPERTY USE:

- Historically this area has been used as an industrial park

Area 4 – Hayfield >>>



EXISTING DESIGNATION:

- None. Buckshee permits issued in the past.

REASON FOR DESIGNATION:

- To allow for registerable, marketable and enforceable commercial lease

DESIGNATION TYPE(S):

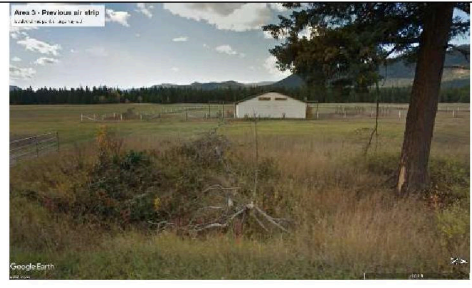
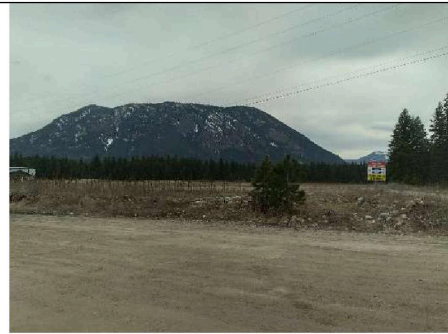
- Hybrid

CURRENT STATUS:

- An appraisal needs to be carried out
- A site survey must be completed
- An Environmental Site Assessment must be completed

PROPERTY USE:


- Historically used as an agricultural hayfield



*** All areas will be a Hybrid Designation. A Hybrid Designation allows for a variety of economic development and the Band is not stuck doing a General Designation or a Specific Designation.**

Please keep in mind that if COVID-19 is still around when the time comes to vote, we will have the option for the Band Membership to vote by mail, electronic and in person with staggered times to allow for safe distancing.

For more information, please contact:
Lands Manager
Sylvia Andrews
Little Shuswap Lake Band
1886 Little Shuswap Lake Road
Chase, BC V0E 1M2
(250)679-3203 ext 109
sandrews@lslb.ca



SKWLAX
LITTLE SHUSWAP LAKE BAND

Notes:



If you’d like to join our mailing list, please complete the section below and return to Brian Finlay, Lands Officer (bfinlay@lslib.com)

Name:	
Address:	
City, Province:	
Postal Code:	
Phone:	
Email:	

TERRITORIAL RESOURCE STEWARDSHIP

CULTURAL HERITAGE PROTECTION

Weytk,

We hope all are staying healthy and safe! The Cultural Heritage Protection department is responsible for managing proposed development projects that may impact cultural heritage sites and Little Shuswap’s use, rights, and interests within these impact areas. Some of the cultural heritage sites may include ancient sites (archaeology), trails, harvesting and ceremonial areas.

The department manages and conducts yearly archaeological and research assessment projects to address the potential impacts to cultural heritage sites within Little Shuswap’s homelands.

CONTINUING AND UPCOMING PROJECTS

The 2021 Field Season is staying busy! Field Technicians Brandon Daniels, Howard Wood, Marla Philip and Ralph McBryan have been working with Stantec on the **Kicking Horse Canyon (KHC SDR PH4)** project in Golden, BC. They have kindly provided us with photographs of the work. The KHC crew is doing systematic data recovery (1 m x 1 m) excavation units. Here is a selfie of Howie and Brandon on site!

As the warm weather continues, team members will head to Revelstoke, BC to conduct an archaeology assessment for the **Revelstoke Mountain Resort**. We have also recently been awarded work by Revelstoke Mountain Resort to conduct a Secwepemc Cultural Heritage Assessment for the proposed 4km Valley Trail from Revelstoke City to Revelstoke Mountain Resort and Williamson Lake.

The **Tappen MOTI Highway Expansion** has been well underway, and stage one of the work is almost complete. The field crew (Phoebe Murphy, Meaghan Griffith, Sam

Switzer, Natalie Dewing, Abby Wilson, Patrick Arnouse, Debbie Frenchy, Randy LeBourdais, Shanika Howard, Dale Tomma, Destiny Tomma, Miykhaela Tomma, Jeremy Tomma, Jamie Bruce, Lynn Morrison, Savannah August, Brenden Stewart and Noldo Williams) have been doing a fantastic job! We are anticipating conducting monitoring work this fall, and are excited to be working in the area again for another season. In addition, we also have a little more shovel testing to be completed on the Squilax MOTI Highway project.

Little Shuswap has also been involved in providing project support on archaeological assessments for other communities and heritage consultants. Field Technician’s Danelle Francois, John Scarff, and Rose Tomma have done a great job travelling to and working on these projects.



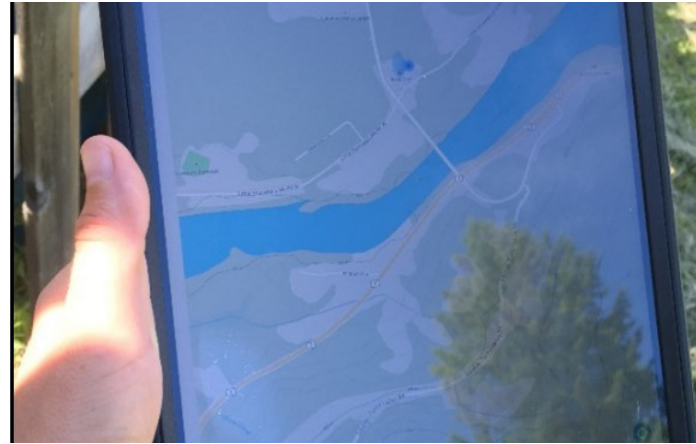
RESERVE LAND & HERITAGE MANAGEMENT

Archaeological assessments are conducted prior to any development on any land in Canada (on or off reserves), which is the responsibility of the person/s that want to build on the land. The archaeological assessment will assist in how to manage any expected impact to a possible archaeological site, such as avoiding or recovering archaeological site information (i.e., artifacts) prior to any land altering activities. These types of assessments are very important to Little Shuswap Lake Band, as a member of the Secwépemc Nation. Knowledge of the past links the identity of the Secwépemc and the only information we have about events of the ancient past way of life, therefore the interpretation of artifacts and features (e.g., cultural depressions, cooking pits) is dependant on the integrity of the immediate context.

Little Shuswap has been conducting archaeological assessments on Quaaout IR1 and Scotch Creek IR4. Archaeological monitoring has been conducted by Rose Tomma. Great job, Rose!

Any type of development on the Little Shuswap reserve lands requires an archaeological assessment to be completed. Fortunately, Little Shuswap has their own archaeology department to conduct these assessments, and our costs are considerably less than using consulting companies. Contact: Nola Markey (Cultural Heritage Manager) nmarkey@lslb.ca; Archaeologists: Maggie Poirier mpoirier@lslb.ca; Meaghan Griffith mgriffith@lslb.ca; or Sam Switzer sswitzer@lslb.ca

CULTURE AND LANGUAGE PROJECT



Waytkp!

Summer is almost here, and with it comes the warm weather and start of the field season for many community harvesters and Territorial Resource Stewardship staff. This month we've completed training for Geokeeper, an app that can be used on phones and tablets to map Little Shuswap values and activities on the land. The app can be used within, and outside of, cellular service range, and will be used by the Guardian program to monitor and map Little Shuswap knowledge, use, and protect these values on the land. Several Guardians have completed the training, and will test the app in the field this season. The Culture and Language Team has completed the Language video, and are finishing the music for the Scotch Creek and *yecweminte r tmicw* stewardship videos. The team will be in contact with contributors over the next month to review the draft videos.

Kukstemc.

Libby Chisholm

Little Shuswap Lake Band – Land Use Plan – Now Underway!

Weytk! - The Little Shuswap Lake Band (LSLB) is currently in the process of developing a Land Use Plan for the Quaaout IR#1, Chum Creek IR#2 and North Bay IR#5 (Tappen) reserves. The project is being led through the Lands Department and builds off the Land Use Planning Approach and Recommendations Report (Phase 1) undertaken in 2020.

Why Undertake a Land Use Plan for these areas?

In undertaking this Land Use Plan, we are hoping to gain a better understanding of what community members want for these lands moving forward. This Plan will help to support decision-making for future reserve land use, including residential, commercial and community uses. This process will aim to provide clarity on what these uses may include, and in particular will:

- Provide an opportunity for all community members to get involved in shaping the future use of these lands;
- Identify areas for potential development and protection;
- Advance LSLB's path to self-determination;
- Provide greater clarity to the community about where various land uses will go;
- Help to determine infrastructure servicing requirements to enable new development; and
- Assist LSLB in acquiring government funding.

How can I make my voice heard?

Land Use Planning is a community driven process and it is the voice of community members that will guide the Land Use Plan.

That is why it is important that we hear from you.

Throughout the land use planning process, the Project Team will look to engage as many community members as possible, including those living both on and off reserve. Potential upcoming and on-going engagement opportunities will include:

- A Virtual Town Hall Meeting
- Open Houses (Tappen and Quaaout)
- Community Survey
- Individual Family Meetings
- Elders Engagement Sessions
- Youth Engagement Sessions

We will also be engaging the recently established Community Advisory Committee to help to ensure the project is meeting the needs of the broader community.

How can I stay informed?

In order to keep community members informed throughout the Land Use Planning process, the Project Team will be providing regular updates on the new LSLB website (www.lslb.ca).

We will also be providing updates through our community newsletter and social media platforms. The Land Use Plan project is just getting started, so please stay tuned!

For more information on the Land Use Plan and upcoming engagement, please feel free to reach out to the following:

Sylvia Andrews, Lands Manager
250-679-3203
sandrews@lslb.ca

Thank you for your time and participation. Please make sure your voice is heard!

Employment Information Session

When: July 13, 2021

Time: 10 a.m. to 3 p.m.

Where: Quaaout Lodge, Little Shuswap Band

Purpose:

- Share information on the Transmountain Project, including potential training and employment opportunities with Ledcor Sicim Limited Partnership on Spreads 3/ 4A
- Learn more about potential upcoming opportunities with companies such as Interfor and BCIB
- Meet with Work BC and A.T.E.C to learn more about training and employment supports

Process for attending:

Due to COVID restrictions, we have limited capacity on attendance. Therefore we ask that you contact Tara Whitney of LSLP to book an appointment to ensure you secure a spot to meet with all of the booths.

For more information contact Tara Whitney, Employment & Training Coordinator, LSLP @ 780.903.5348.



Attention all Little Shushwap Lake Nation Members!

Are you an entrepreneur, an artist, or have an idea or initiative to improve your community?

Are you interested in winning \$10,000.00?

The Steel River Group (SRG) has launched its first Entrepreneur Challenge, and it is open to all SRG ECOSYSTEM PARTNERS!

Little Shuswap Lake Band	Aseniwuche Winewak Nation	Manitoba Metis Federation
Willow Lake Metis Nation	Stoney Nakoda Nation	Alexis First Nation
Meadow Lake Tribal Council	Metis Nation of Alberta, Region 3	Tobacco Plains

THE CHALLENGE

Entrepreneur visionaries are encouraged to submit an idea in the form of a business plan through Steel River Group’s online email portal, or through the designated community representative. It will be scored by a panel of judges, including Steel River Group’s Founder and CEO, Trent Fequet.

CATEGORIES:

This is an opportunity for the Artists, Social Groups, and Entrepreneurs of our Ecosystem to share their talents, skills, and ideas to flourish and grow. Broken down into three distinguished categories, Cultural, Social, and Economic, these awards represent the key foundational pillars Steel River Group champions for all partners.



Cultural

The cultural category is for those that think outside of the box. The beauty of life is experienced through a lens that is not numbers and profit. The entrepreneurs in the cultural category are creators, visionaries, and storytellers, and include artists of every medium: carvers, painters, beaders, writers, and knowledge keepers.



Social

The social category is for those who want to give back, create positive and lasting change, and support their community. Visionaries in this category are creating charities, not for profits, social enterprises, or community giving.



Economic

The economic category is for revenue-driven, for-profit entrepreneurs that want to make an impact in construction, the trades, manufacturing, restaurants, or an online business, to name a few. Revenue and job creation is the force behind this category.

The deadline for Business Plans is due in just over 8 weeks!

HOW WILL THE CHALLENGE BE JUDGED?

A panel of 6 judges, including Steel River Group's founder and CEO, Trent Fequet will be reviewing the submissions from each category. Each submission will be scored on the feasibility of the business or social enterprise idea, uniqueness of the product, good or service, and the future of the endeavor or project being successful.

The more detailed business plans the better! We cannot wait to hear about your idea or product!
You are the expert at your business or social initiative! Please tell us everything about it!

Please make an appointment with Geena Jackson - 604-306-7736

She will assist you every step of the way with the scope of your project and assist with the completion and submission of your Business Plan.

*For more information, please visit the Steel River Entrepreneur Challenge website
<http://steelrivergroup.com/steel-river-entrepreneur-challenge/>*

Submission Deadline

Monday, August 9th, 2021

- NO LATER THAN 4:30 pm.

All applications are to be emailed to
entrepreneurchallenge@steelrivergroup.com

Dates to remember:

- Launch – June 7th, 2021
- Due Date – August 9th, 2021
- Judge and Evaluation – August 30th, 2021
- Winners Announced – September 1st, 2021
- Entrepreneur Summit & Winner Recognition – October 21st, 2021

The deadline for Business Plans is due in just over 8 weeks!

Subscribe to LSLB Communications

Little Shuswap Lake Band Communication Department is asking all Band Members to update their contact information if you move or have a change in your contact information. It is important for the Band Office to have up to date information of our Membership. We use this information to keep you informed about upcoming news relevant to our people.

By filling in this form, you are giving consent to be added to our Communication Data Base.

LSLB Communications Department Data Base

Please Print

Date _____

First Name _____

Last Name _____

Email _____

Phone _____

Street Address _____

City _____ Province _____

Postal Code _____

Mailing Address (if different)

Street Address _____

City _____ Province _____

Postal Code _____

How would you like to receive communications from Little Shuswap Lake Band?

☐ Email ☐ Mail ☐ Phone ☐ LSLB Website ☐ Door Delivery (when available)

Please return form to:

Little Shuswap Lake Band

Attention: Communications Department

1886 Little Shuswap Lake Rd Chase BC V0E 1M0

Email: ematusiak@lslb.ca

Kukstemc

Emma Matusiak

Communications Officer